



Vulcan Mill, Malta Street, Manchester

£1,150 PCM

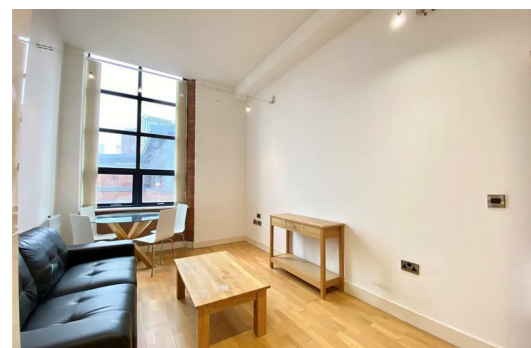
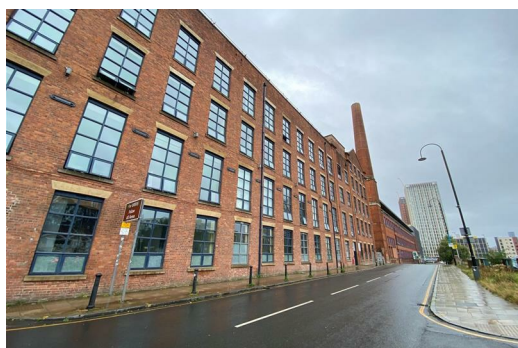
Previously a working factory during Manchester's Cottonopolis era, Vulcan Mill offers the comfort of a high quality development with a truly unique flavour.

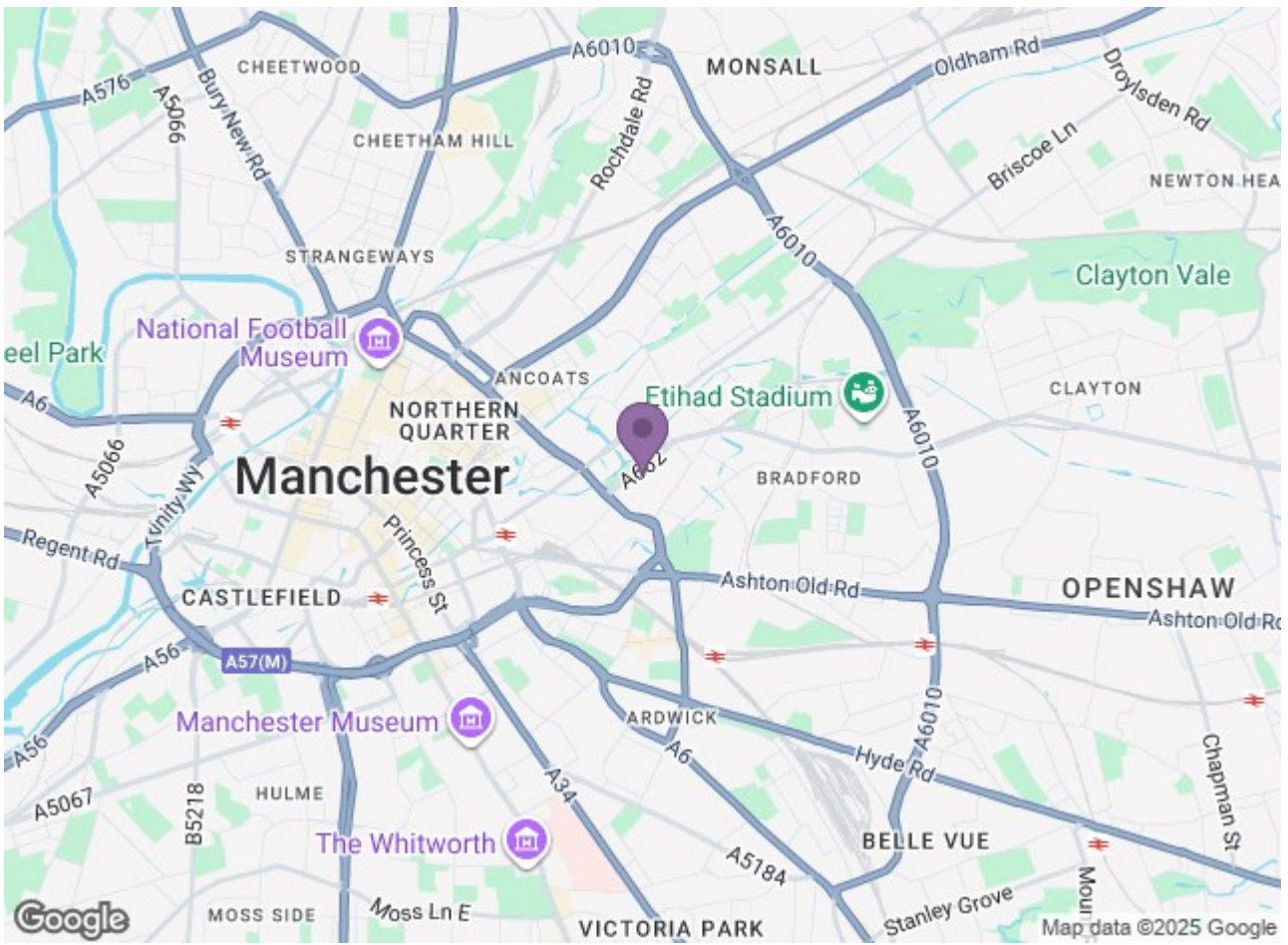
Completely refurbished, with great furnishings to boot, this one-bedroom apartment delivers all the comforts of modern living without losing the character of its roots. There's plenty of exposed brickwork, metal poles and giant mill-sized windows, along with your easy-living, open-plan kitchen/lounge, one bathrooms and one carpeted bedrooms.

Vulcan Mill overlooks a big stretch of green land which is bustling in the summer, and is close to all of New Islington's newly-built amenities. There's a Metrolink tram stop nearby to take you into the heart of the city, and the Etihad stadium is a short walk in the opposite direction.

If you're interested in having a closer look, or have any questions, do get in touch. And just so you know, the pictures for this apartment are for marketing purposes only. The internal fixtures, fittings and furnishings may vary.

Available 15th September 2025
12 month tenancy.
Deposit - £1,320
Council Tax Band B.





Energy Efficiency Rating			Environmental Impact (CO ₂) Rating		
Rating	Current	Target	Rating	Current	Target
A			A		
B			B		
C			C		
D			D		
E			E		
F			F		
G			G		
Current: 74	Target: 76		Current: 69	Target: 70	